

RIW

# FORGE

AT RALEIGH IRON WORKS

# TABLE OF CONTENTS

OUR HOOD // 3

LIVE // 8

AMENITIES // 10

APARTMENT FEATURES // 12

ART // 14

FLOORPLANS // 16

BITES // 24

DRINKS // 26

SWEAT // 28

THE VIBE // 30

*Welcome to 😊  
 Forge at Raleigh  
 Iron Works*



RIW

# OUR HOOD



# ABOUT RIW

*innovative, curated, and dynamic spaces. 😊*

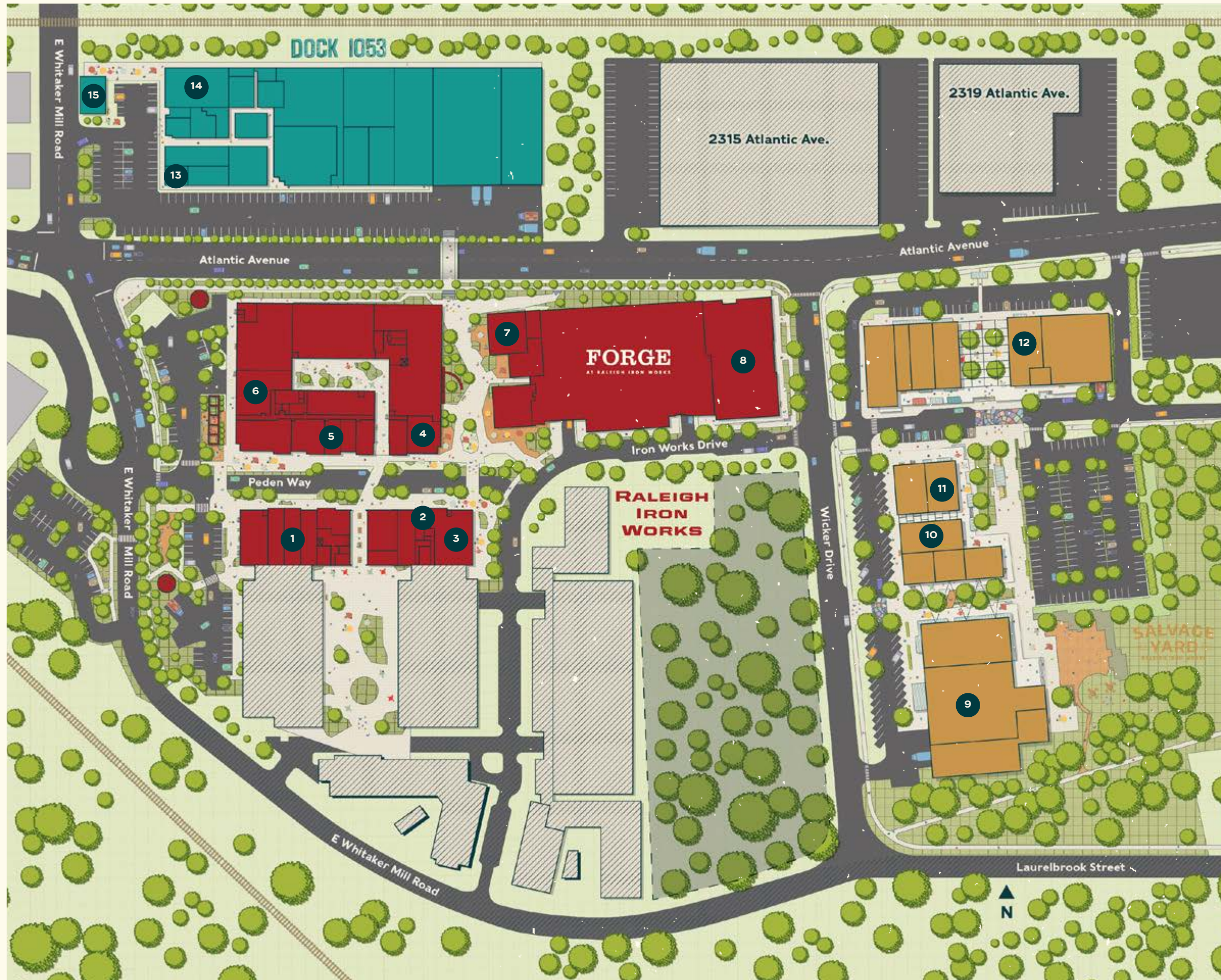
Raleigh Iron Works breathes new life into the Iron Works District while maintaining its distinct history and culture.

Featuring retail, restaurants, office space, and living, along with whimsical additions like an adult slide and swings scattered throughout the property, Raleigh Iron Works is a culmination of Raleigh's rich history. Situated on a formerly industrial stretch of Atlantic Avenue, Raleigh Iron Works is a hub for residents, neighbors, and visitors to live, work, and play.





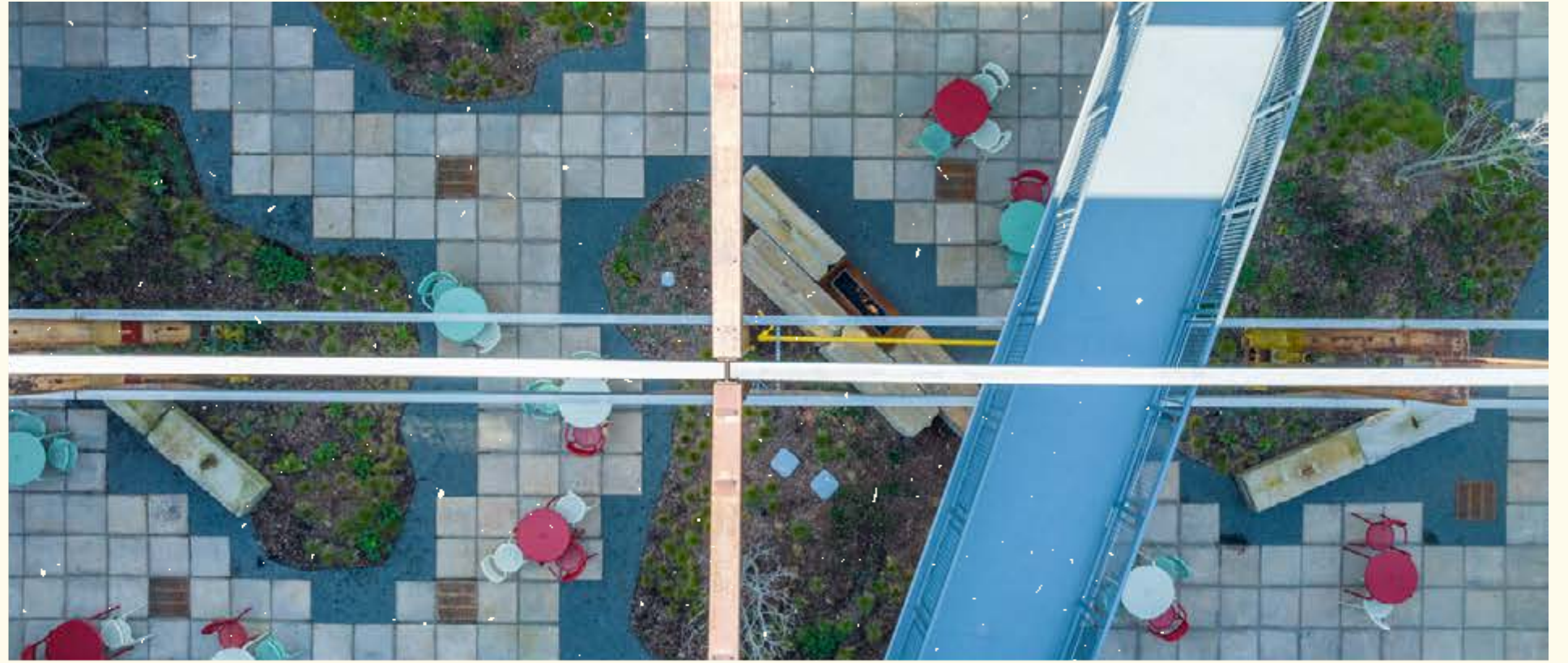
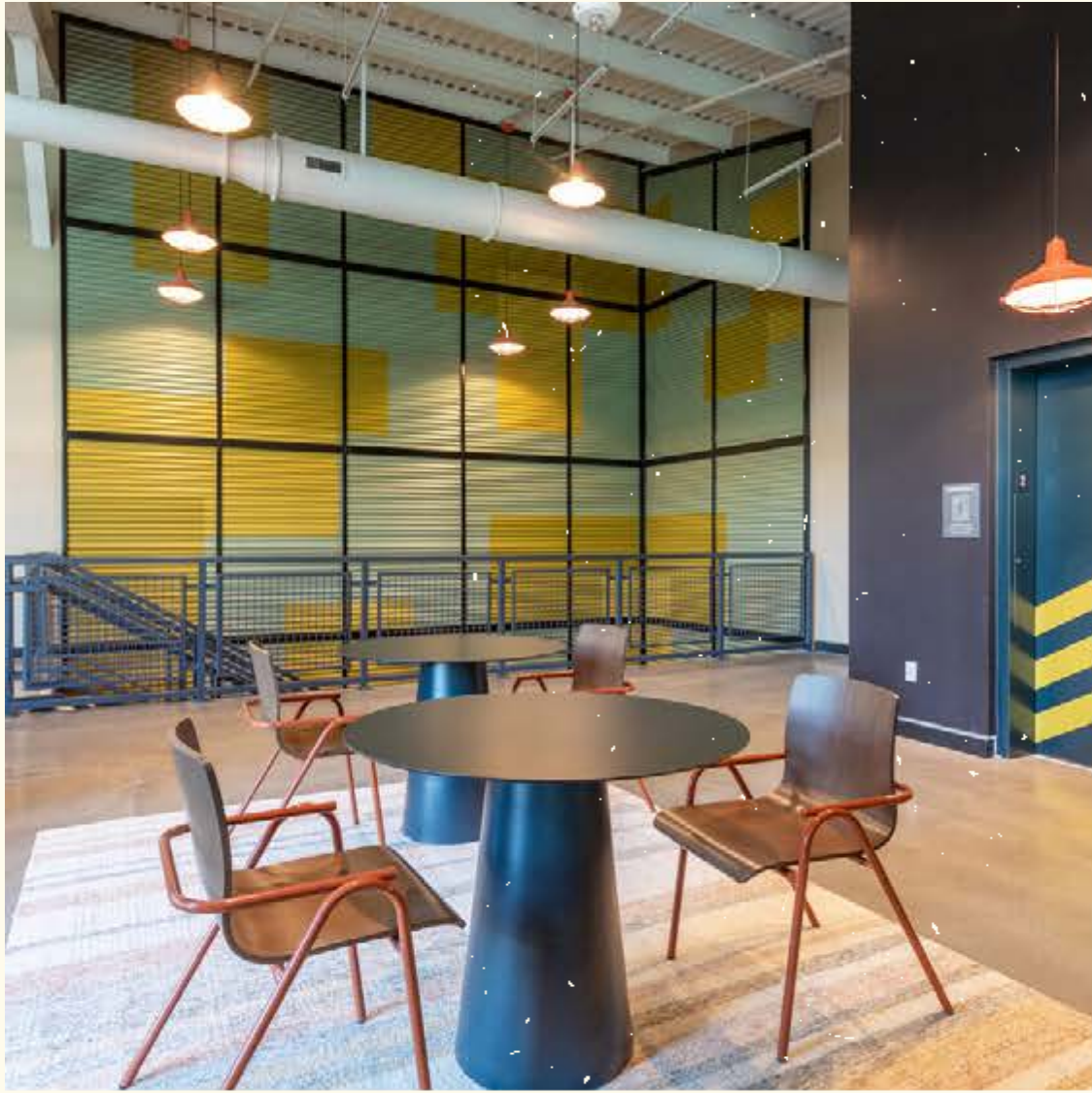
# MEET YOUR NEIGHBORS



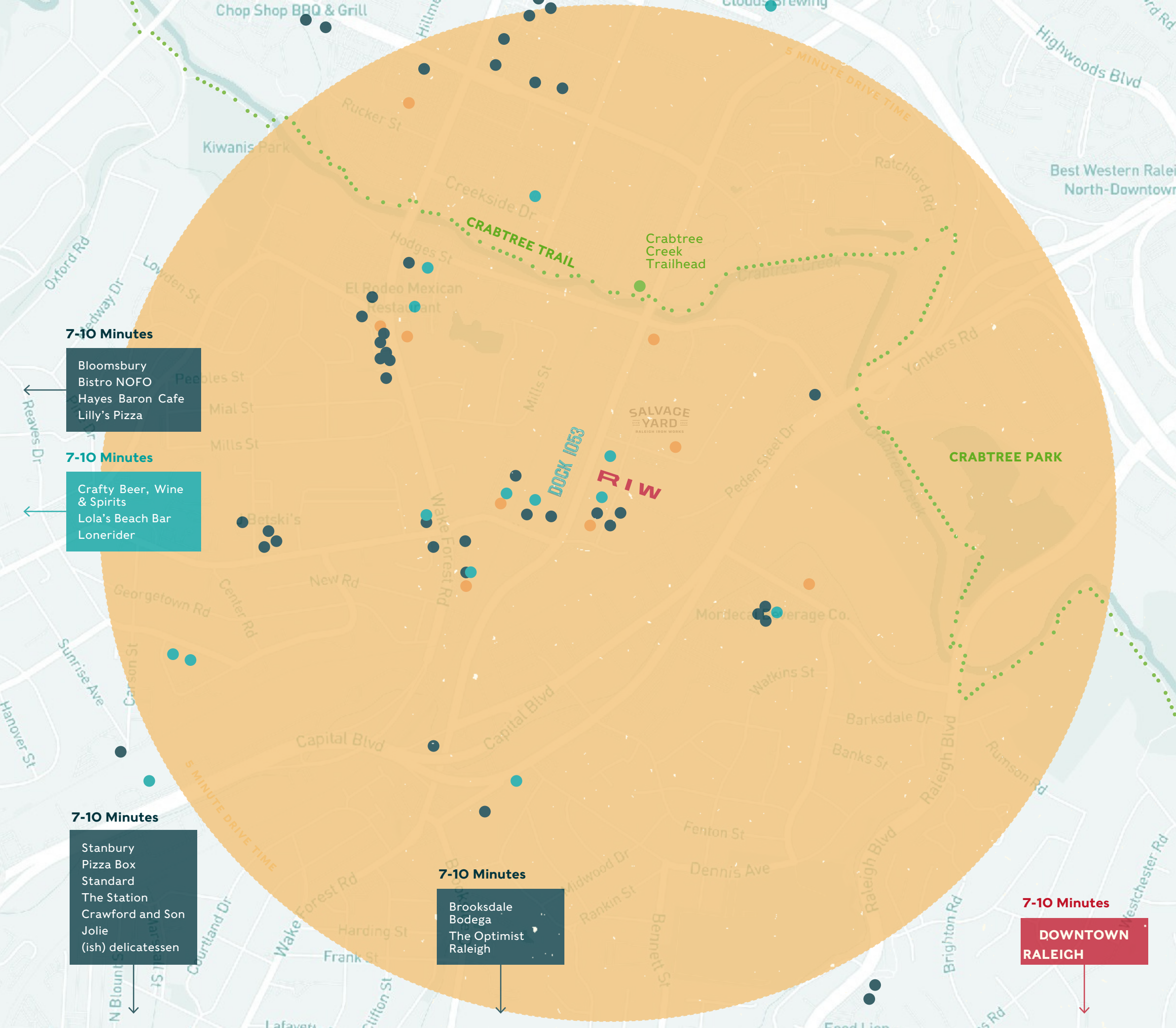
## MEET YOUR NEIGHBORS

- 1. Yoba Studio**  
Winter '24
- 2. Andia's Ice Cream**  
Now Open
- 3. Brodeto**  
Winter '23
- 4. Eastcut Sandwich Bar**  
Now Open
- 5. Beatniks**  
Fall '23
- 6. FX Fitness**  
Now Open
- 7. Ponsaurus Brewing**  
Winter '24'
- 8. Jaguar Bolero**  
Winter '24
- 9. Triangle Rock Club**  
Winter '24
- 10. NOCO Beverage**  
Winter '24
- 11. Pickleball**  
Fall '24
- 12. Music Venue**  
Coming '24
- 13. Hummingbird Cafe**  
Now Open
- 14. Lynnwood Brewing**  
Now Open
- 15. Wilson's Eatery**  
Now Open









**7-10 Minutes**

- Bloomsbury
- Bistro NOFO
- Hayes Baron Cafe
- Lilly's Pizza

**7-10 Minutes**

- Crafty Beer, Wine & Spirits
- Lola's Beach Bar
- Lonerider

**7-10 Minutes**

- Stanbury
- Pizza Box
- Standard
- The Station
- Crawford and Son
- Jolie
- (ish) delicatessen

**7-10 Minutes**

- Brooksdale Bodega
- The Optimist Raleigh

**7-10 Minutes**

**DOWNTOWN RALEIGH**

**BITES**

- |                                  |                                |
|----------------------------------|--------------------------------|
| Brodeto                          | Venture Pizza                  |
| Eastcut                          | Biscuitville                   |
| Andia's                          | Don Beto El Poblano            |
| Wilson's                         | Bright Spot Donuts             |
| Hummingbird                      | Pizza Box                      |
| East End Market                  | Standard                       |
| Bison                            | The Station                    |
| Watkins                          | Crawford and Son               |
| Lilly's Pizza                    | Jolie                          |
| Lola's Beach Bar                 | (ish) delicatessen             |
| NOFO                             | Taste, Small Plates & Wine Bar |
| Hayes Barton Café and Dessertery | Ladyfingers                    |
| Stanbury                         | Brookside Bodega               |
| Escazu Chocolates                | The Optimist Raleigh           |
| Snoopy's                         | El Taco-Keto                   |
| Lee's Kitchen                    | Midtown Pho                    |
| Lam's Garden                     | Gym Tacos                      |
| Union Special                    | Chop Shop BBQ                  |
| Miso Ramen Bar                   | Applebee's                     |
| Fine Folk                        | First Watch                    |
| Pine State Coffee                | Chick-fil-A                    |
| BREW Coffee Bar                  | Jimmy John's                   |
| Jersey Mikes                     | Torchy's Tacos                 |
| FRESKO Greek                     | Crumbl Cookies                 |
| Mami Nori's                      | BurgerFi                       |
| Shuckin' Shack Oyster Bar        |                                |

**DRINKS**

- |   |                                |
|---|--------------------------------|
| Lynnwood Brewing Concern                | Crafty Beer, Wine, and Spirits |
| NOCO                                    | Funguys Brewing                |
| Ponysaurus                              | Clouds Brewing Taproom         |
| Jaguar Bolera                           | Larry's Coffee                 |
| Bowstring Pizza & Brewery               | Moredcai Brewing               |
| Nicklepoint Brewing Company             | Ancillary Fermentation         |
| R&D Brewing- Seven                      | Taste, Small Plates & Wine Bar |
| Saturdays Taproom                       | Nuvo Lounge Bar                |
| Nuese River River Brewing and Brassiere | Loafer's Beach Club            |
| East Bower Cider Co.                    | Shuckin' Shack Oyster Bar      |

**FITNESS**

- |                                 |                                    |
|---------------------------------|------------------------------------|
| Planet Fitness                  | Hard Work Strength and Performance |
| Studio Revolution               | Studio Revolution                  |
| Club Cardio & Fitness Bar       | GLOW Fitness                       |
| F45 Training                    | Row House Fitness                  |
| MEGA                            | Body Force Boxing Gym              |
| Triangle Rock Club              |                                    |
| Capital Strength & Conditioning |                                    |

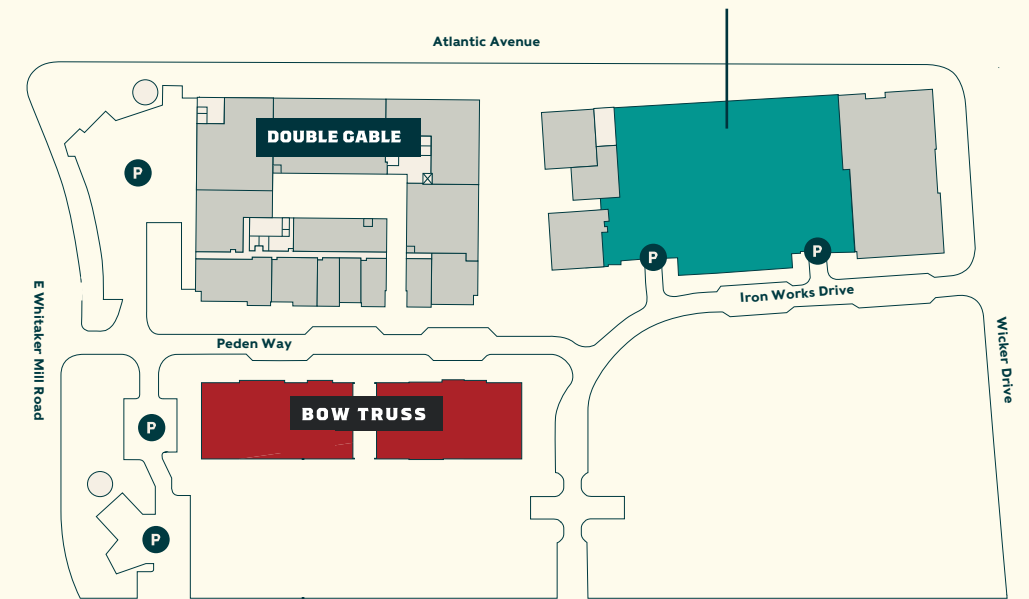
**RIW**

**LIVE**



# LIVE

## FORGE AT RALEIGH IRON WORKS



## AMENITIES

- Centrally located to some of Raleigh's best neighborhoods
- Minutes from Downtown Raleigh
- Walking distance from local retailers including Andia's Ice Cream, Eastcut Sandwich Bar, Brodeto, Ponysaurus Brewing, Little Rey, YOBA Fitness, FX Fitness, Jaguar Bolera, and more!
- Expansive outdoor terrace with top-level resident lounge
- State-of-the-art fitness center open 24/7
- Salt-water pool and lounge deck
- Outdoor grilling areas and dining nooks
- Hands-Free access control system
- Expansive windows and natural light
- Plank flooring in select units
- Arcade and resident entertainment lounge
- Community co-working spaces
- Select units feature expandable living features
- Furry friend welcome!





RIW

# AMENITIES



# AMENITIES



Enjoy modern amenities forged in industrial history. With everything at your fingertips, Forge at Raleigh Iron Works is the perfect place for you to live, work, and play. Head downstairs and utilize one of our conference rooms, meet as a group or take some time for yourself in our private phone booths. Enjoy games galore in our community lounge and barcade. Sweat it out in our expansive gym and yoga studio, then kick back and relax at our saltwater pool.

With bars, restaurants, fitness concepts, and eatertainment options, you'll find all you need at the Raleigh Iron Works District, just step out your front door and enjoy!



YOBA STUDIO

BEATNIKS

andia's  
ICE CREAM



RIW

# APARTMENT FEATURES



# APARTMENT FEATURES

*the essentials* 😊

## The Basics



- Plank style or cement slab flooring throughout living areas
- Smart home integration - climate control through Nest thermostats
- GE front loading washer and dryer
- Shades included throughout
- Floor to ceiling windows in living spaces

## The Kitchen



- Grey or White matte cabinetry with silver contemporary hardware and under-cabinet lighting
- Stone quartz countertops
- Stainless steel appliances
- GE electric range and oven
- GE stainless steel dishwasher with dual spray arms
- Soft close cabinetry

## The Bathroom



- Ceramic tile flooring
- Stone quartz countertop
- Under-mounted sink
- Brushed nickel features
- Tile showers with glass doors in master bathrooms
- Bathtub/shower combination in all secondary bathrooms
- Soft close cabinetry



**RIW**

**ART**



# ART INSTALLATIONS

*A public collective of  
artists works*

Raleigh Iron Works is part of the public arts collective, the Collision Project. Providing space for local artists to showcase their work, RIW is committed to showcasing works of different mediums, sizes, and backgrounds.

Multidisciplinary artist Gabriel Eng-Goetz, a Durham native, created a mural that reflects the industrial history of the property. Featuring a female iron welder, the mural spans seven stories facing Atlantic Avenue and is meant to be a beacon to the property.

Graffiti artist Morgan “MCK” Cook, a Raleigh native, created a graffiti mural inspired by the association of graffiti with railway systems, his mural can be found in the pedestrian passageway leading to the slide.

Painter and muralist Taylor White, a Raleigh native, created her mural celebrating the site’s history of iron and steel manufacturing, this piece is featured on the exterior wall of Forge facing Wicker Drive.





RIW

# FLOOR PLANS



# FLOORPLANS

## S1

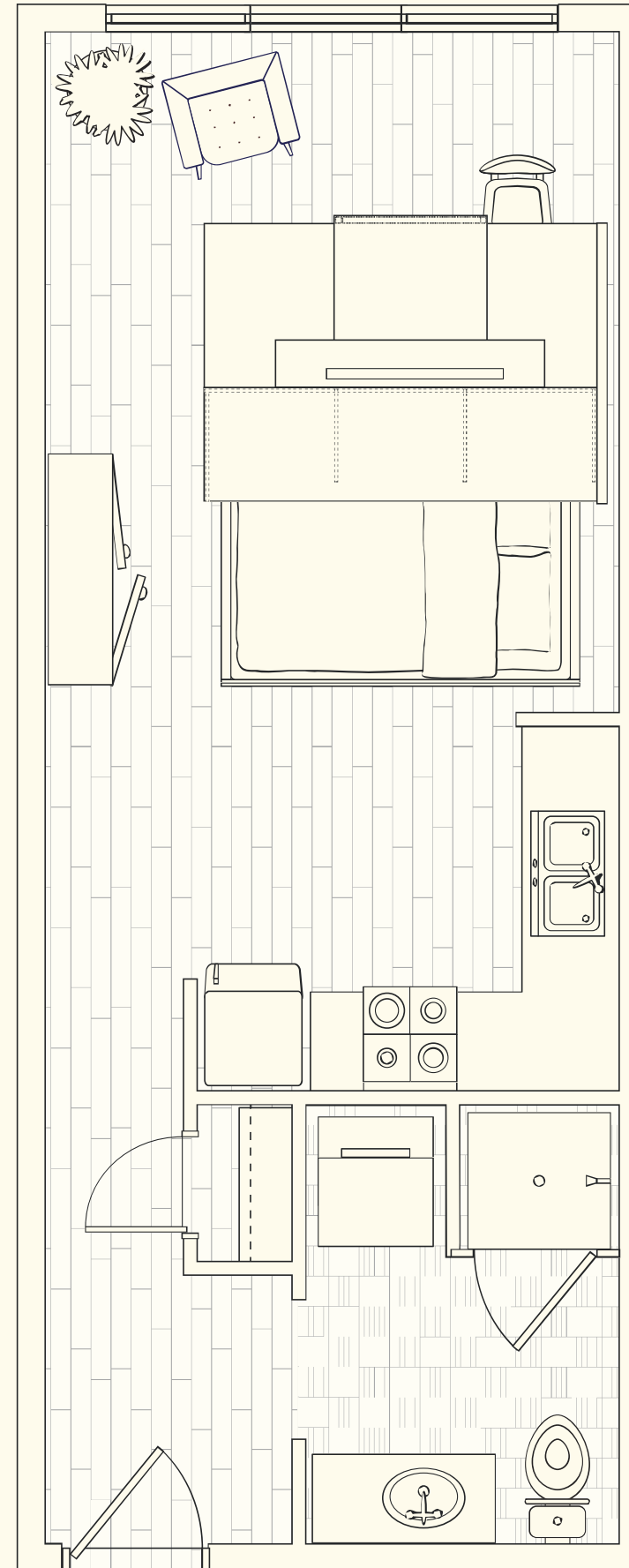
**Ori micro studio / 1 bath / 433 sf**

**Expandable Semi-furnished Studio**

Move right in with built-in essentials that double your space

*A new take on furnished ☺*

A new take on move-in ready, the Ori Studio+ delivers luxury essentials you need to feel at home from the moment you arrive. You get a bed, dining table/workstation, media console, and dresser/wardrobe, all included—no need to bring or buy your own. Equipped with an Ori Pocket Studio, the Ori Studio+ is also powered by technology. At the touch of a button, the Pocket Studio slides open to reveal a bedroom nook, or slides away to reveal an expansive living space or walk-through closet. The airy, architectural design offers a neutral canvas for your personal style, so you can still settle in and make it your own (go ahead, hang that picture). With the key pieces taken care of, you can take your time settling in and explore your new city.

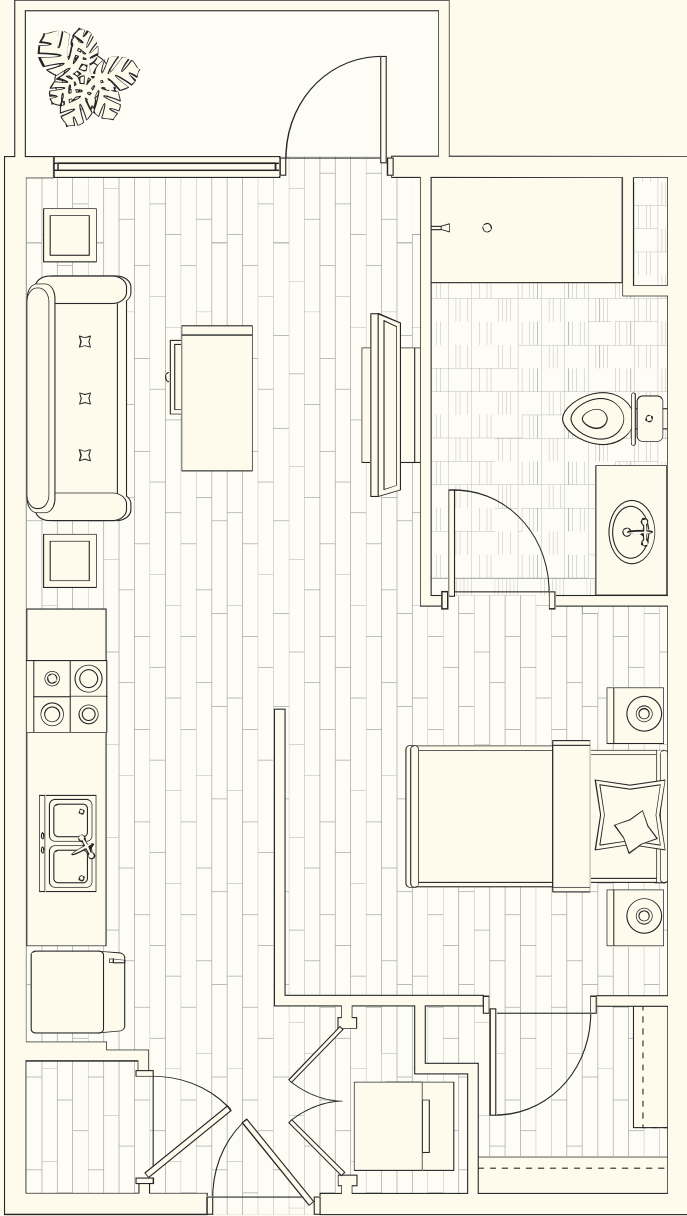




# FLOORPLANS

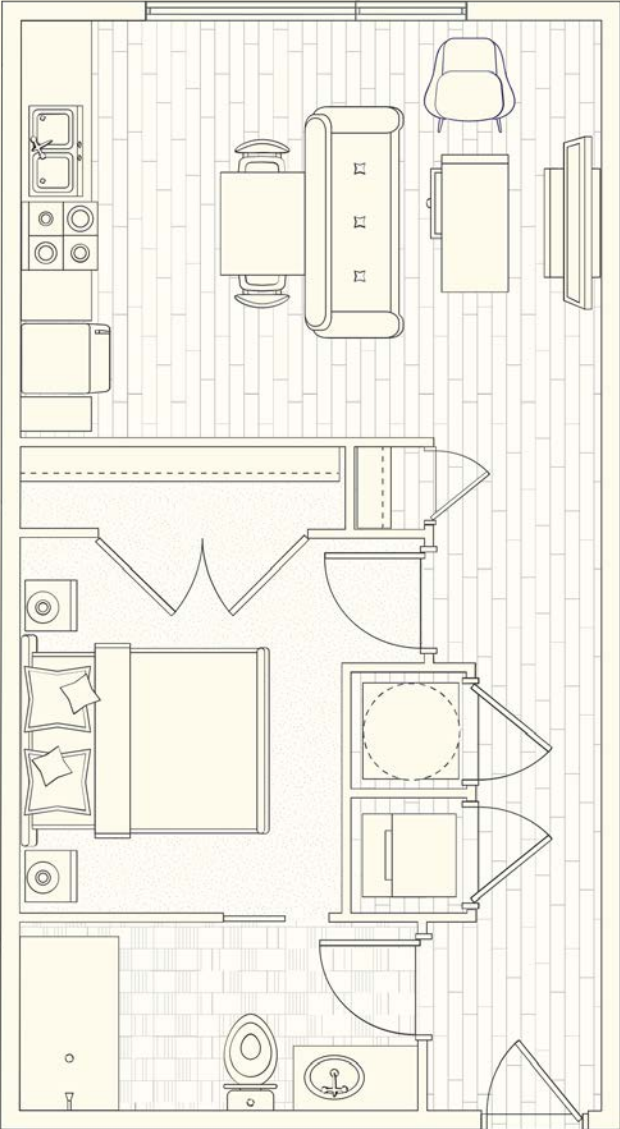
## S2

Studio / 1 bath / 501 sf



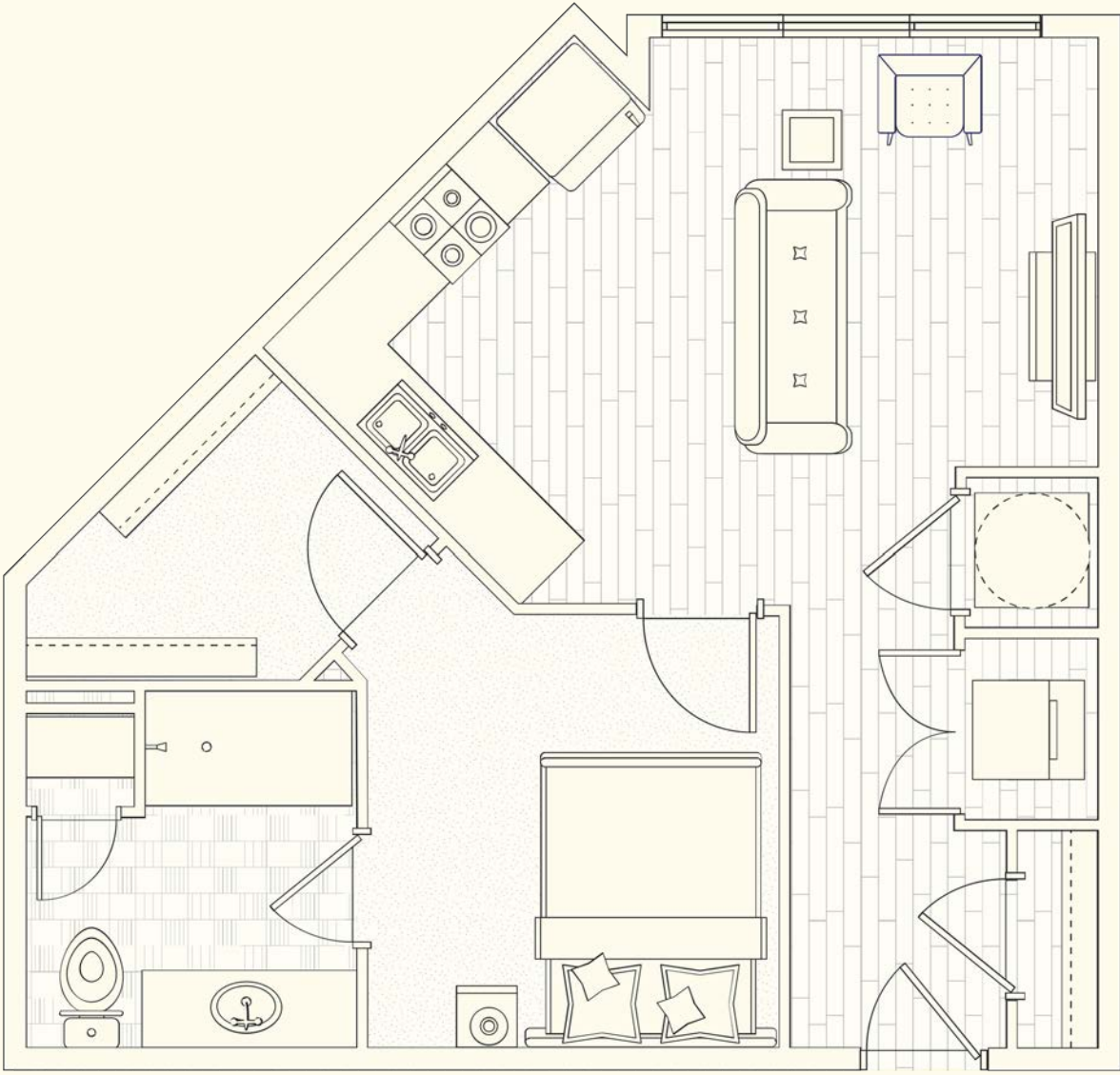
## S3

1 bed / 1 bath / 594 sf



## S4

1 bed / 1 bath / 615 sf

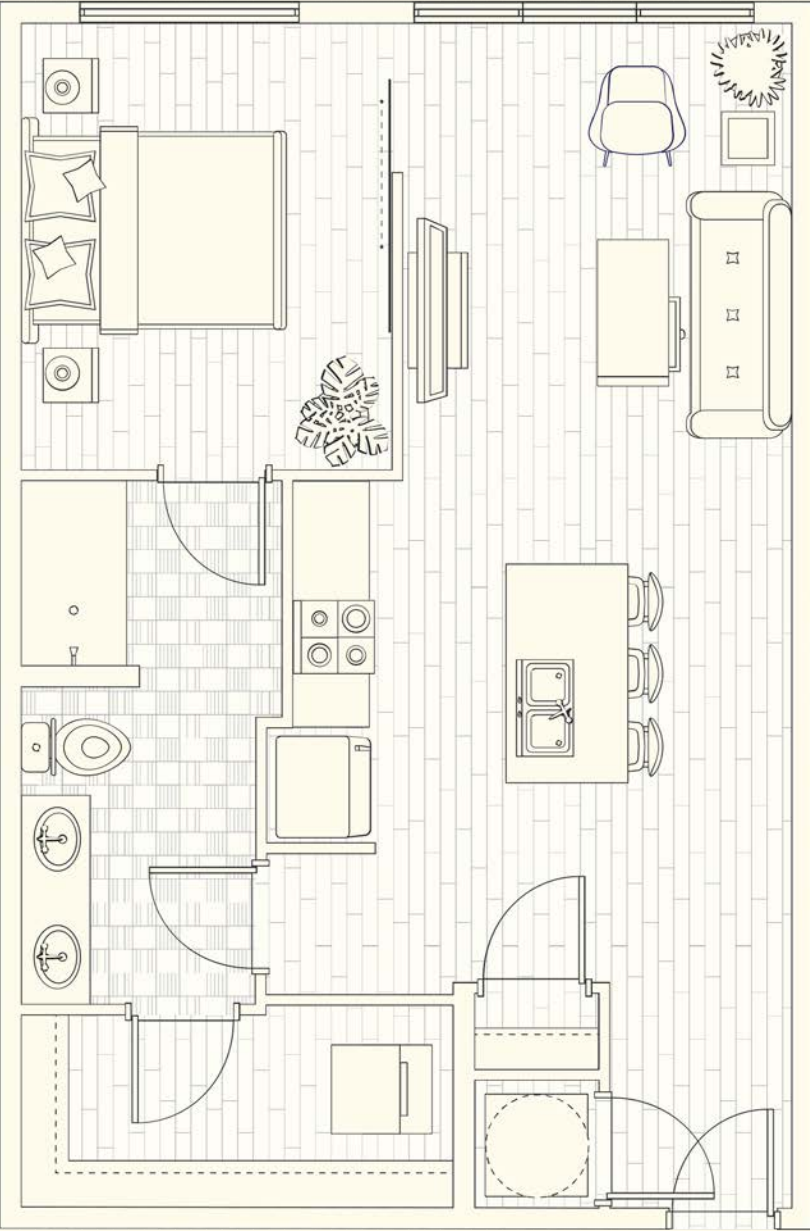




# FLOORPLANS

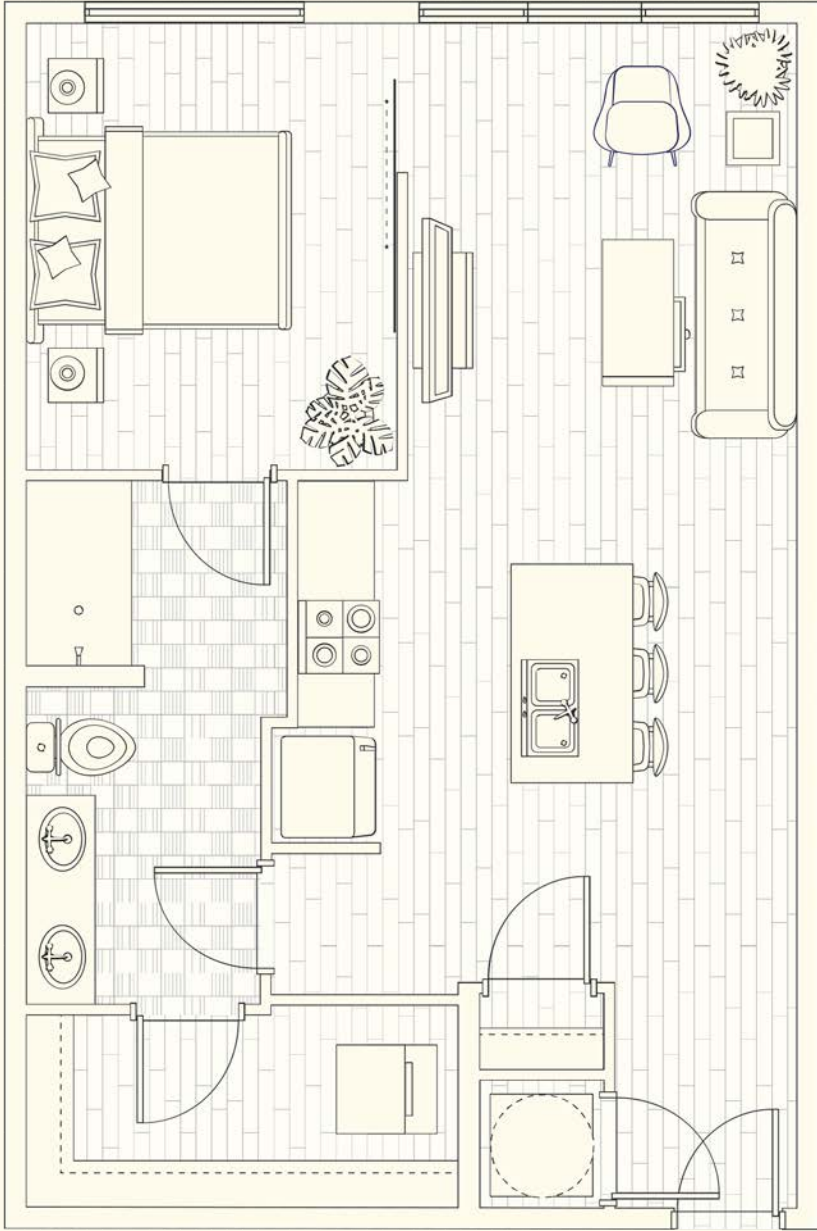
## A1

1 bed / 1 bath / 737 sf



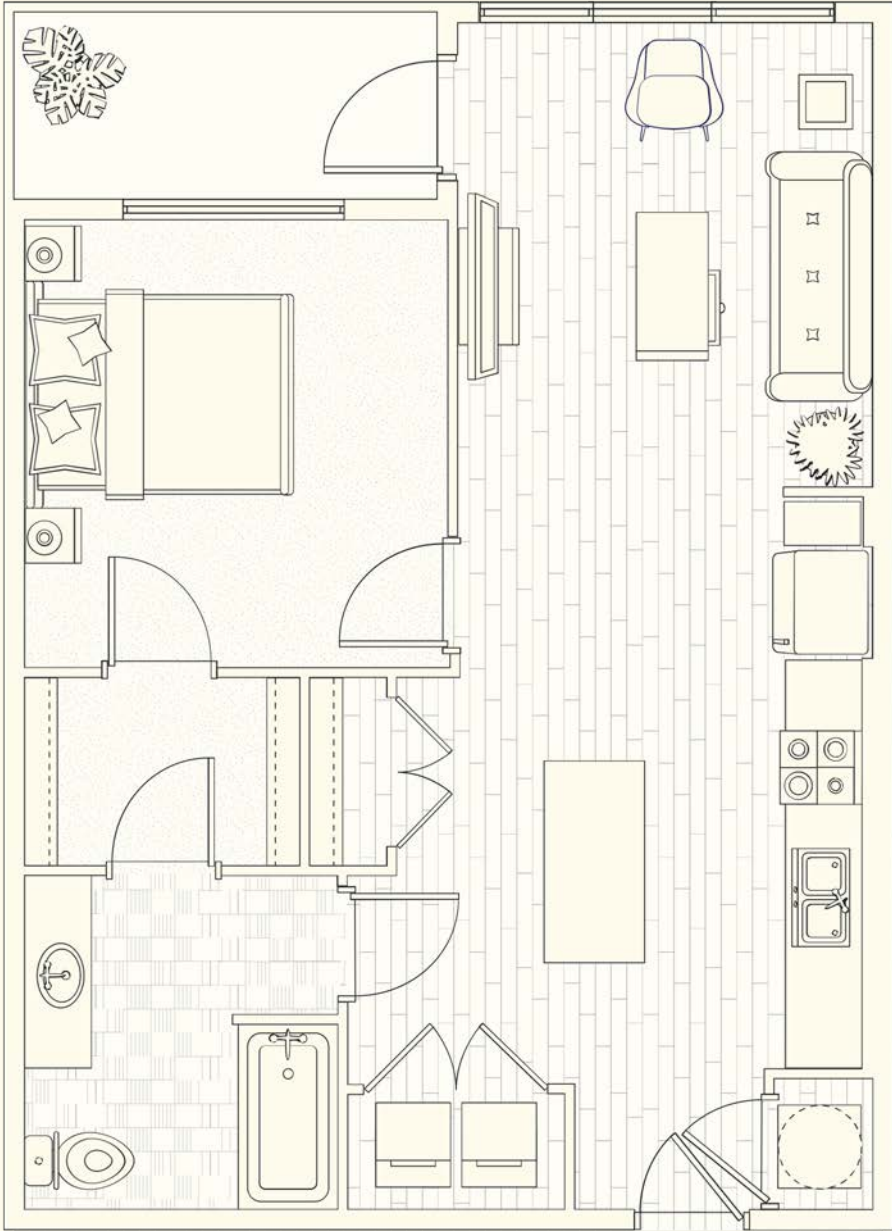
## A2

1 bed / 1 bath / 731 sf



## A2-A

1 bed / 1 bath / 731 sf

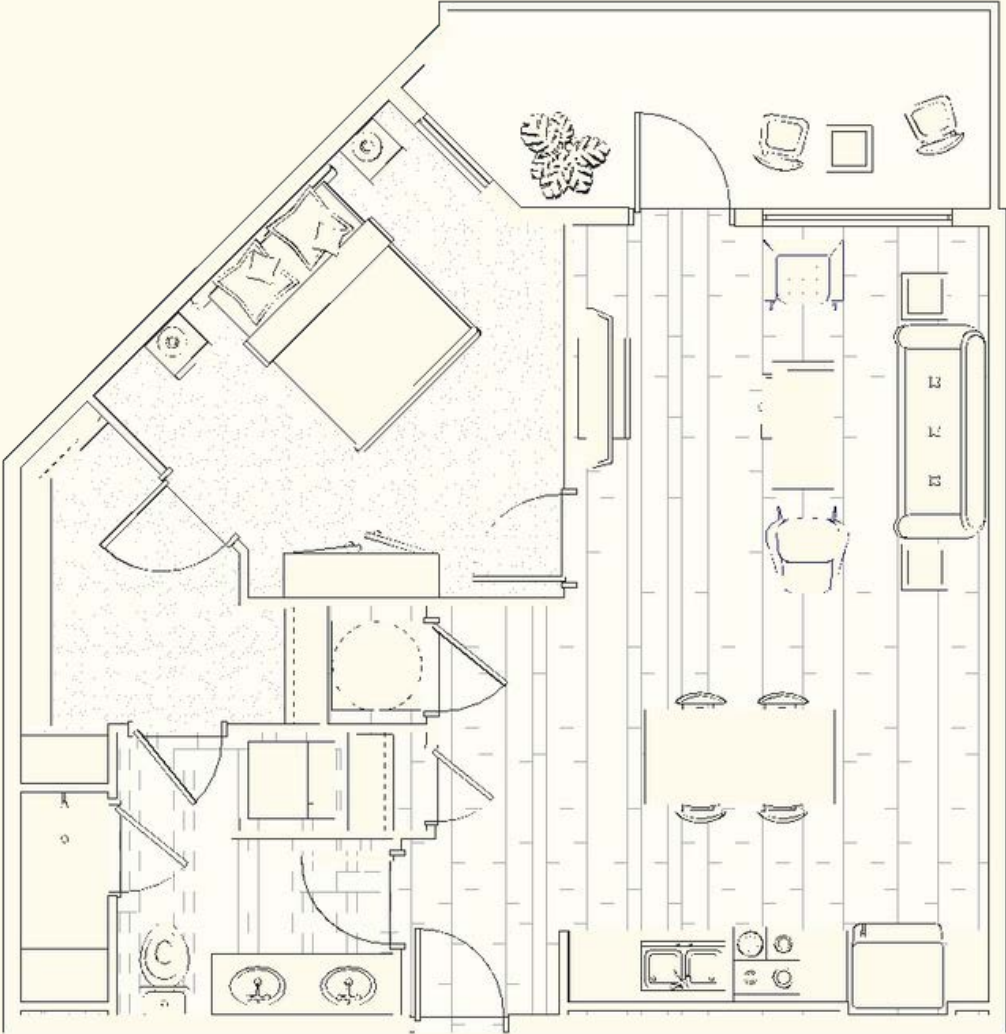




# FLOORPLANS

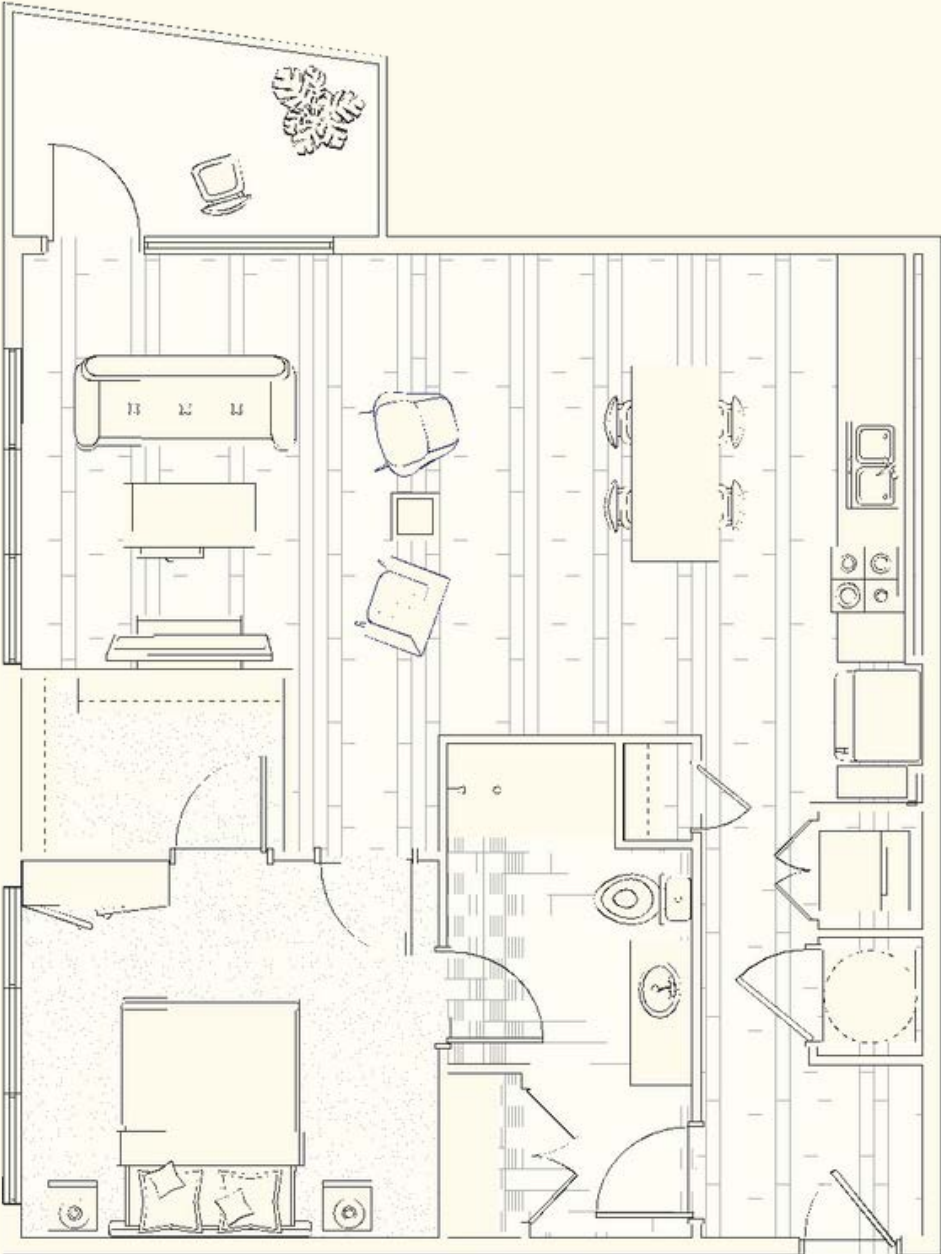
## A3

1 bed / 1 bath / 798 sf



## A4

1 bed / 1 bath / 865 sf

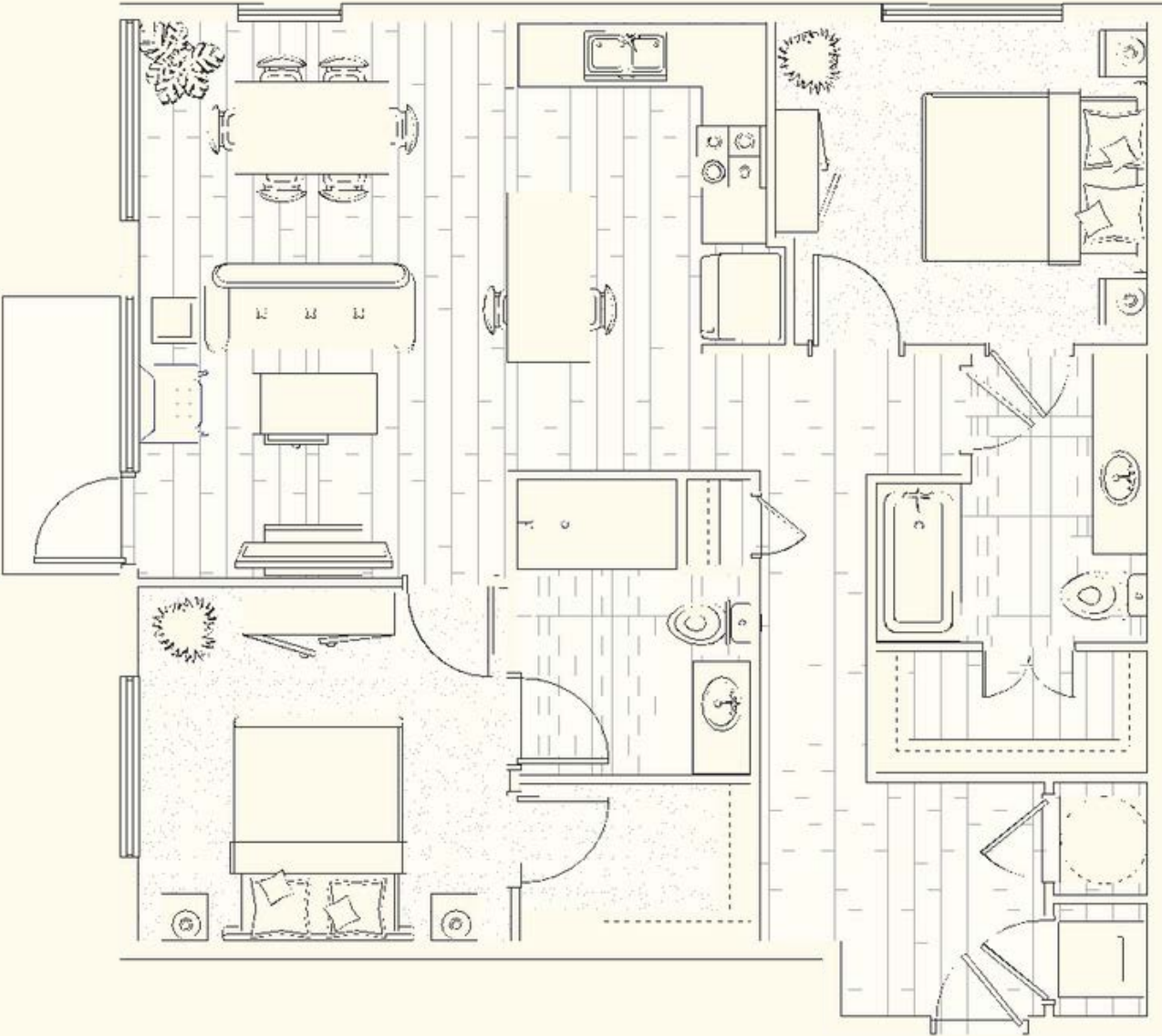




# FLOORPLANS

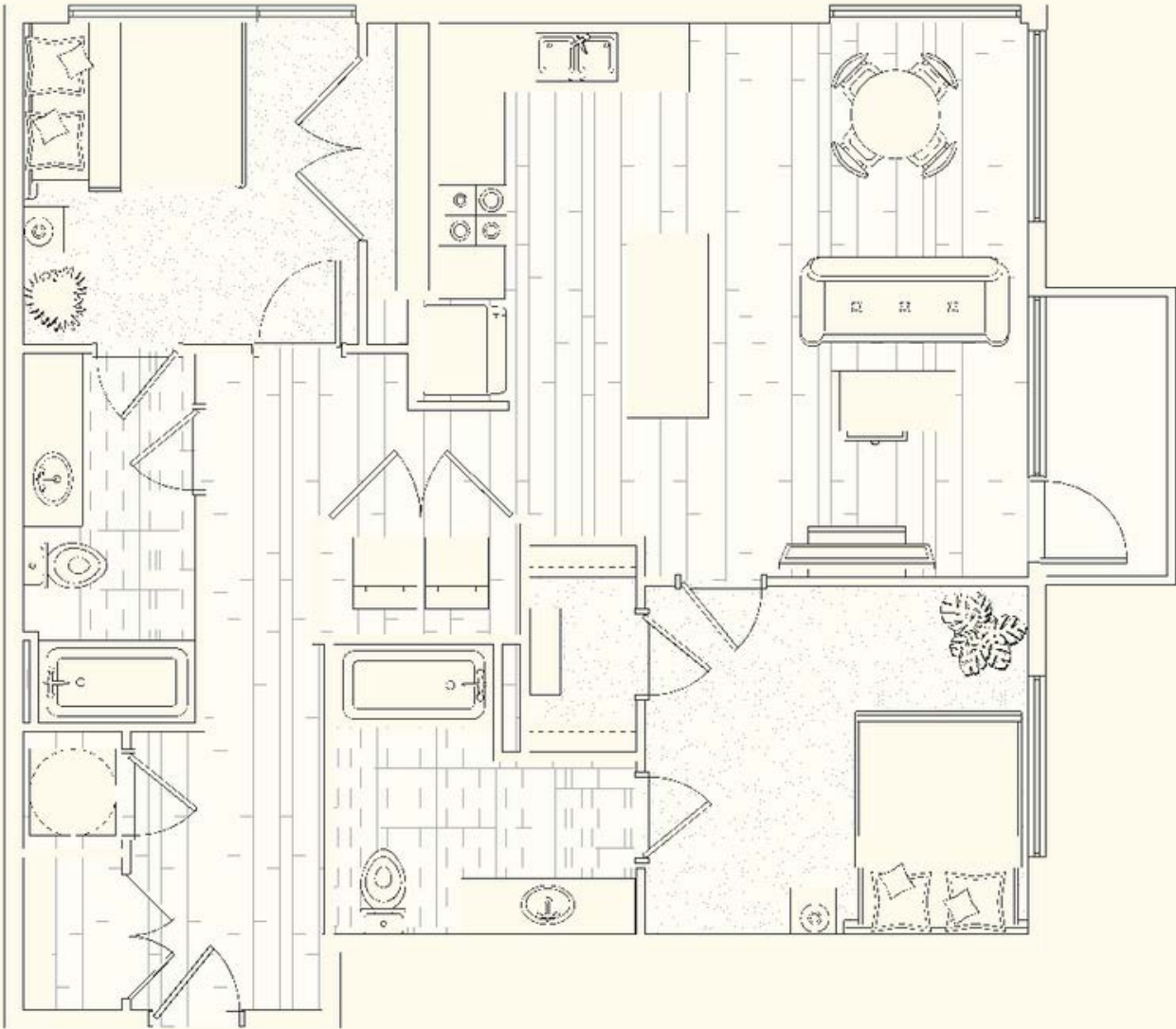
## B1

2 bed / 2 bath / 1,061 sf



## B1-A

2 bed / 2 bath / 1,056 sf

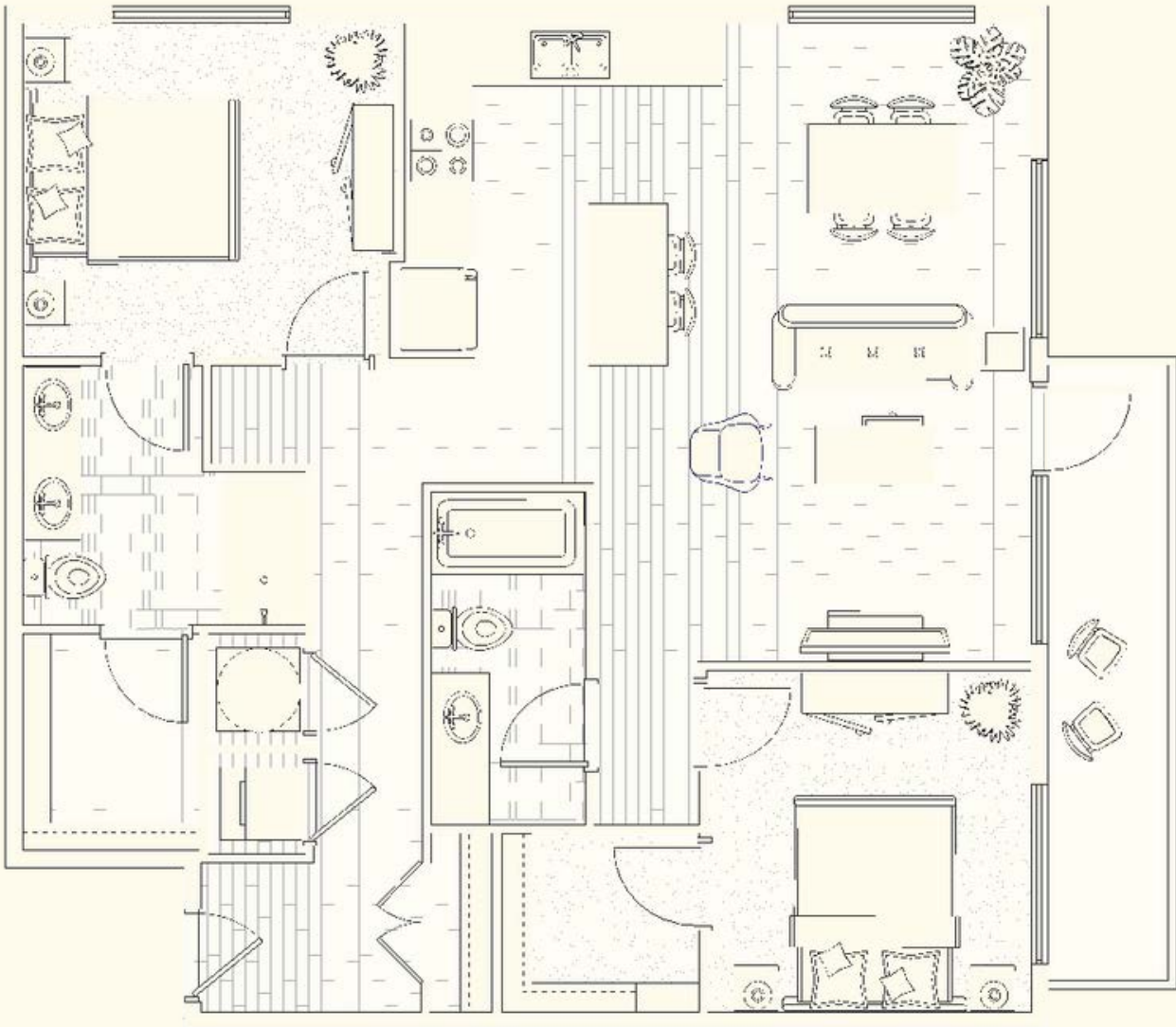




# FLOORPLANS

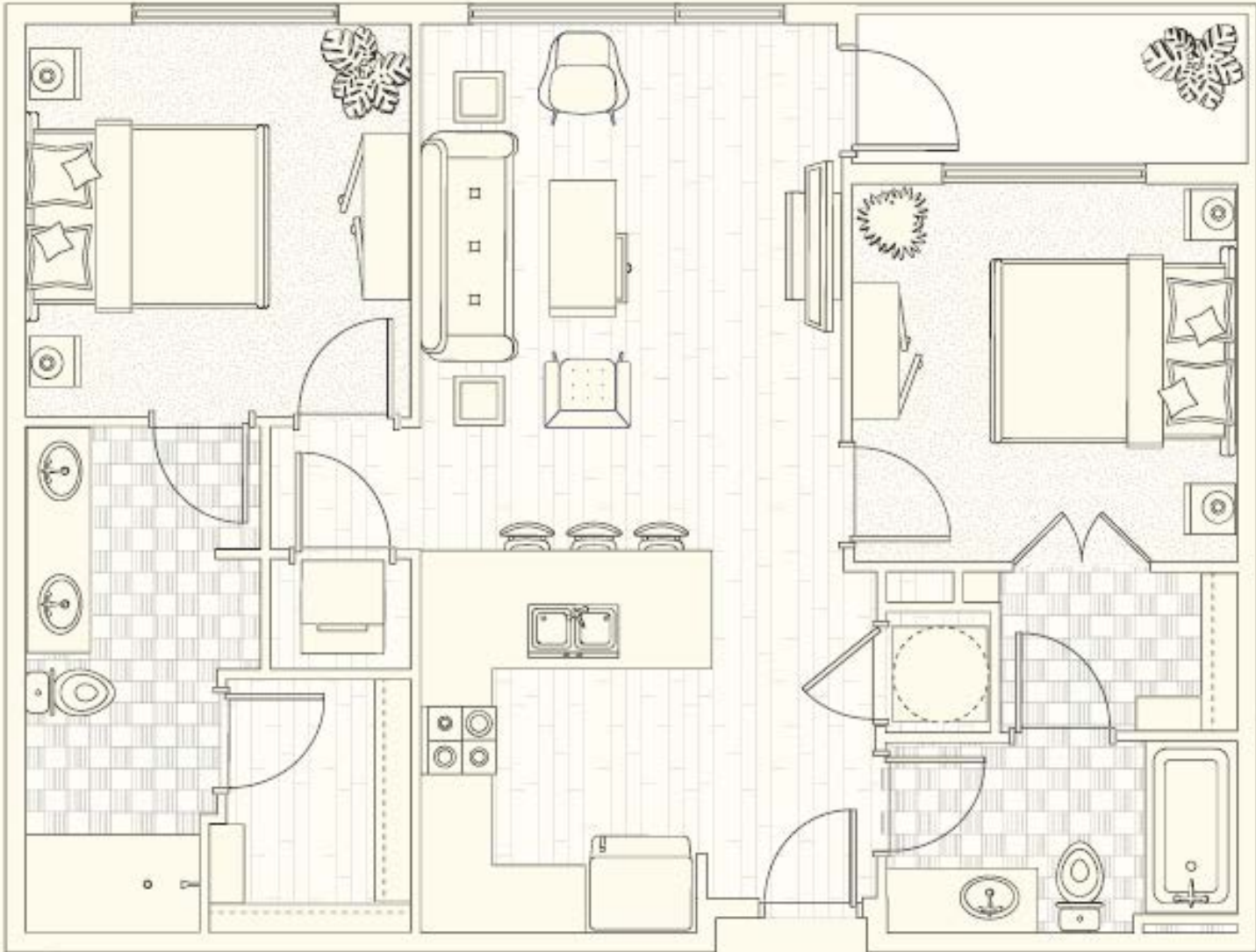
## B2

2 bed / 2 bath / 1,167 sf



## B3

2 bed / 2 bath / 1,167 sf

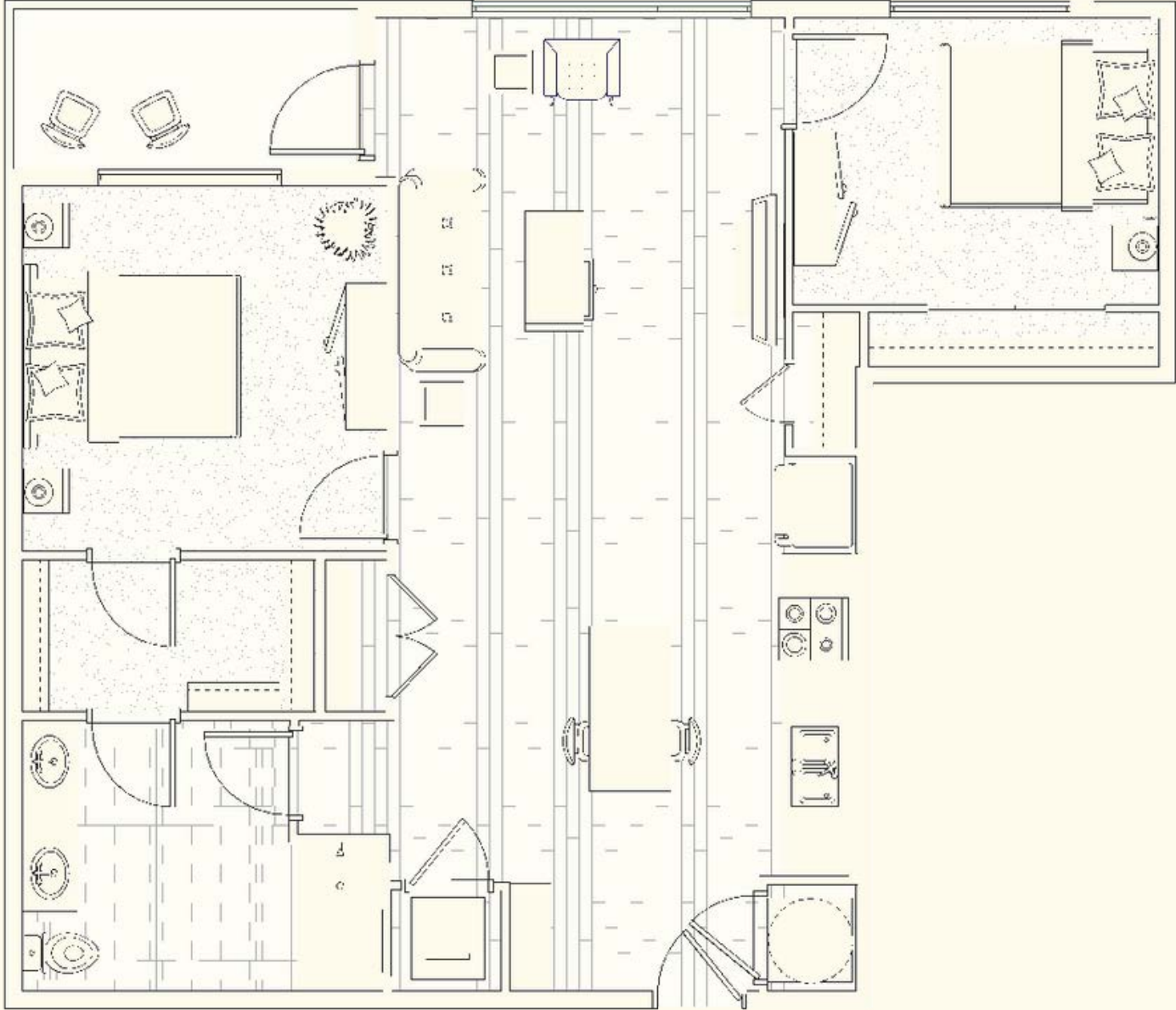




# FLOORPLANS

## B4

2 bed / 1 bath / 1,028 sf





RIW

# BITES







RIW

# DRINKS





Lynnwood Brewing  
Concern

NOCO

Ponysaurus

Jaguar Bolera

Neuse River Brewing  
and Brasserie

East Bower Cider  
Company

Crafty Beer, Wine, and  
Spirits

Bowstring Bowstring  
Pizza & Brewery

Nicklepoint Brewing  
Company

R&D Brewing- Seven  
Saturdays Taproom

**BREWS, CIDERS &  
COCKTAILS NEARBY**



RIW

**SWEAT**



# YOBA STUDIO

OPENING WINTER '23

@yobastudio



TACKLE FITNESS GOALS



# FX

NOW OPEN

@fx.fitness

PICKLEBALL OPENING '24



TRIANGLE  
ROCK CLUB

OPENING '24

@trianglerockclub





**RIW**

# **THE VIBE**





# MUSIC VENUE

OPENING '24



# LOCAL ARTISTS



# POP UP SHOPS



# JAGUAR BOLERA

OPENING '24



RIW

# FORGE

AT RALEIGH IRON WORKS

A GRUBB VENTURES & JAMESTOWN DEVELOPMENT